

Gd-Zr (Gadolinium-Zirconium)

H. Okamoto

The Gd-Zr phase diagram in [Massalski2] was re-drawn from [1961Cop]. The liquidus boundaries were schematic.

Figure 1 shows the Gd-Zr phase diagram that was calculated by [2001Zin]. Figures 2 and 3 are enlarged sections on the Gd-rich end and the Zr-rich end, respectively. The phase diagram data used in the thermodynamic modeling were the same as those used for drawing [Massalski2]. Ap-

parently, the diagram of [2001Zin] is thermodynamically more consistent.

References

1961Cop: M. Copeland, C.E. Armantrout, and H. Kato, Report of Investigation 5850, U.S. Bureau of Mines, 1961

2001Zin: M. Zinkevich, N. Mattern, and H.J. Seifert, Thermodynamic Assessment of Gd-Zr and Gd-Mo Systems, *J. Phase Equilibria*, 2001, Vol 22 (No. 1), p 43-50

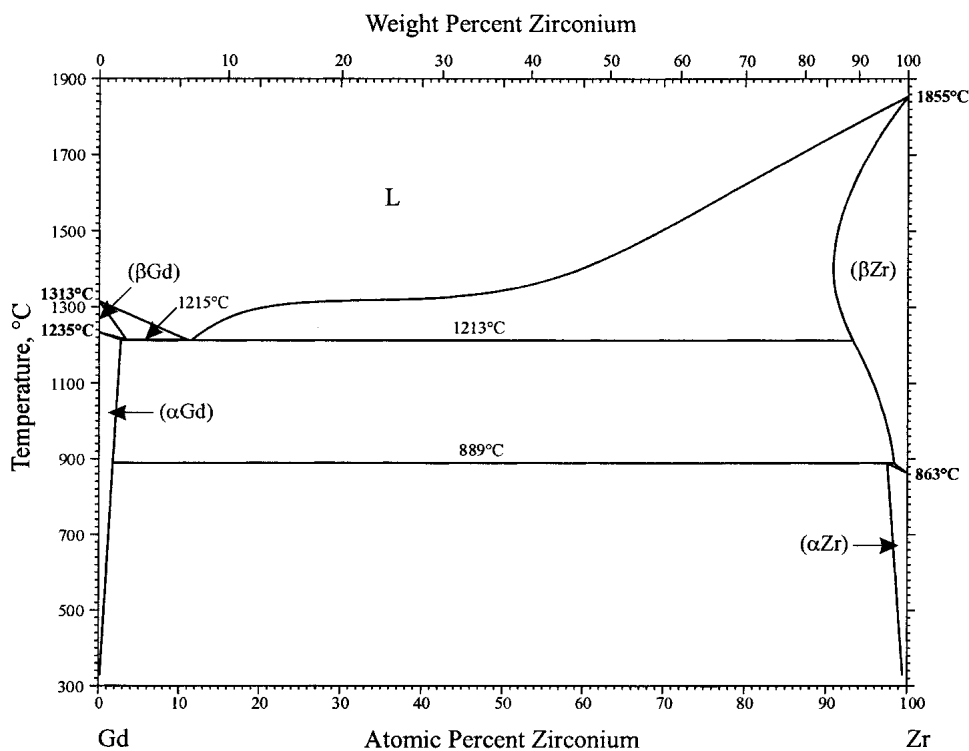


Fig. 1 Gd-Zr phase diagram

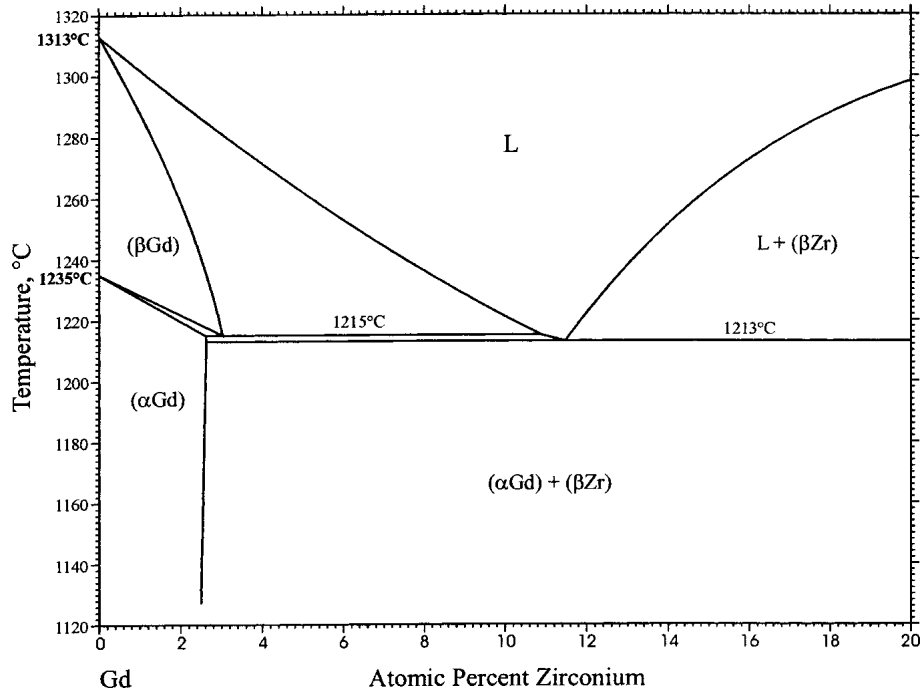


Fig. 2 Gd-rich corner of the Gd-Zr phase diagram

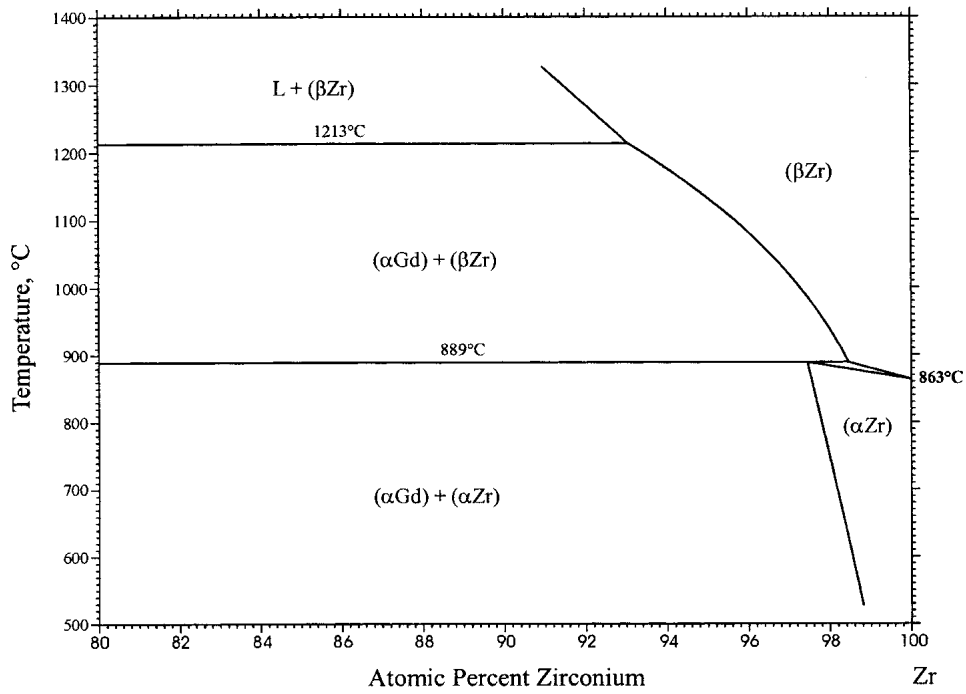


Fig. 3 Zr-rich corner of the Gd-Zr phase diagram